

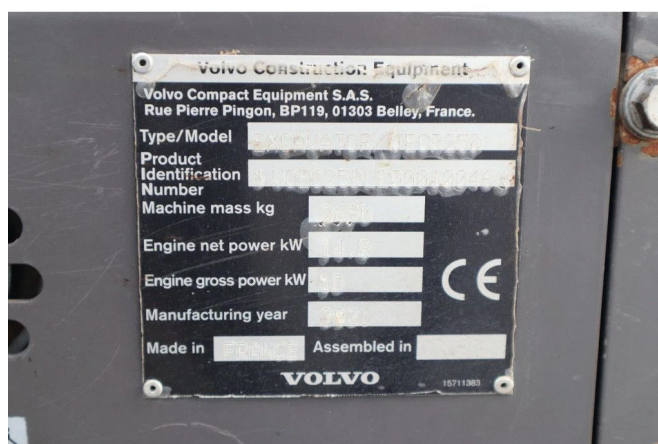
Volvo ECR25 ELECTRIC | JECR25D | TILTBUCKET | BUCKET | LOW HOURS

COMMON

ID	114057
Marque	Volvo
Chassis	Graphe

PROPERTIES

Année de construction	2021
Heures de travail	539
Numéro d'identification véhicule	VCEC25DLE00010046
Poids à vide	2.690 kg



ACCESSOIRES

- Ordinateur de bord
- Phare arrière
- Phare de travail avant

DESCRIPTION

Emissieklasse: Stage V

For sale:

Volvo JECR25D / ECR25D Electric
 Year: 2021
 Hours: 539
 Operating weight: 2.690 kg

Electrical system:
 Battery type: Lithium-ion
 Voltage: 48V
 Battery capacity: 20 kWh
 Indicative runtime: up to 4 hours
 Motor type: permanent magnet
 Power: 18 kW

Undercarriage:
 Rubber tracks 80%
 Sprocket: 70%
 Dozer blade

Equipment:
SMP quick coupler S40
Tilt bucket (110 L)
Trench bucket (145 L)
Swing away boom
Extra hydraulic function (X1 & X3)
LED Working lights
Rotating beacon
Closed cabin
Cabin heater
Radio
Charge cable

Description:
Good working Volvo excavator. Comes with quick coupler, tilt bucket and an extra bucket. Ready for work.

Of course, we have more pictures and information available, and we are looking forward to helping you.

Worldwide delivery is possible!