

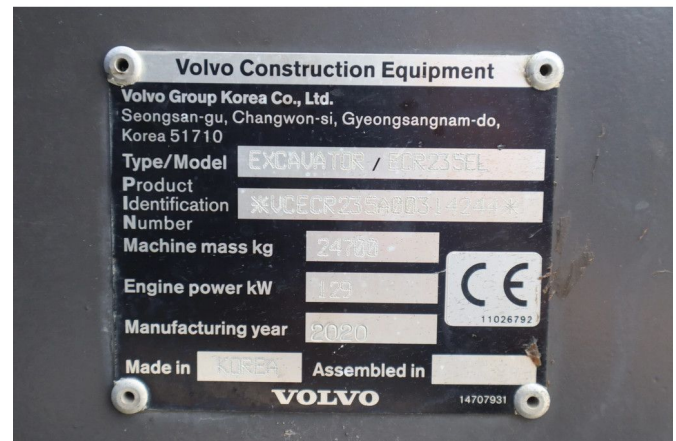
## Volvo ECR235EL | ECR 235 EL | TILTROTATOR | BUCKET | GOOD CONDITION

### COMMON

ID	114037
Marque	Volvo
Chassis	Graphe

### PROPERTIES

Année de construction	2020
Heures de travail	9.034
Numéro d'identification véhicule	VCECR235A00314244
Poids à vide	24.700 kg



### ACCESSOIRES

- Bluetooth
- Phare arrière
- Phare de travail arriere
- Phare de travail avant
- Sièges à suspension pneumatique

### DESCRIPTION

Emissieklasse: Stage V

For sale:

Volvo EC 235 EL  
 Year: 2020  
 Hours: 9.034  
 Operating weight: 24.700 kg

Engine:  
 Volvo D6J  
 Cylinders: 6  
 Displacement: 5.702 cc  
 Power: 129 KW / 173 HP  
 Emissions: Stage 5  
 Ad blue

Undercarriage:  
 Plate width: 60 cm  
 Plates condition: 35%  
 Balls condition: 50%

Chain condition: 50%

Equipment:

Hydraulic quick coupler S70

Steelwrist X26 S70 tilt rotator

Volvo bucket

Hammer / shear

Central lubrication

LED working lights around the machine

Signal light

Cabin:

Rear and side view camera

Radio

Heated seat

Airconditioning

Webasto cabin heating

Transport dimensions:

Length: 8.90 m

Width: 2.10 m