

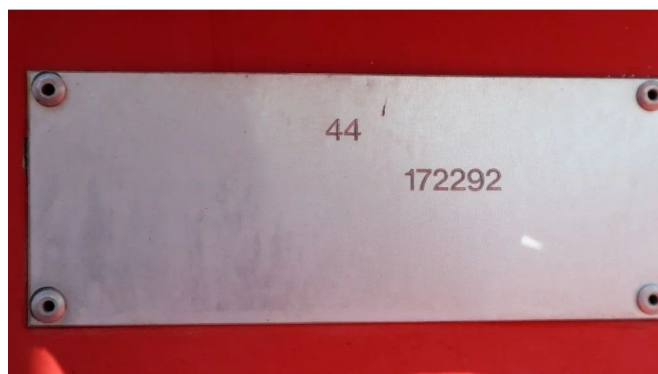
Kalmar RTD 1623 | LOG GRAPPLE | LOG STACKER

COMMON

ID	112042
Marque	Kalmar
Chassis	Grumier

PROPERTIES

Année de construction	2012
Heures de travail	30.080
Numéro d'identification véhicule	17291-172293
Poids à vide	50.500 kg



ACCESSOIRES

DESCRIPTION

Emissieklasse: Stage IIIA

For sale:

Kalmar RTD 1623
Year: 2012
Operating hours: 30.080
Operating weight: 50.500 kg

Engine & Transmission:
Scania DC 12
Nr cylinders: 6
257 kW / 350 hp
Displacement: 11.7 L
Emissions: Stage IIIA / Tier 3
ZF gearbox

Boom and hydraulics:
Log grapple (360 degrees)
Hydraulic log pusher
Total height: 12 m

Grapple capacity: 4.8 m2

Load capacity: 16 ton

General information & options:

Presto fire extinguisher system

Cabin guard system

LED working lights

Rear view camera

Airconditioning

Heated seats

Heated mirrors

BT radio

Description:

Well maintained Kalmar log stacker. Machine has been dismantled for transport, but all parts are complete.

Ready for work!

Of course, we have more pictures and information available, and we are looking forward to helping you.