

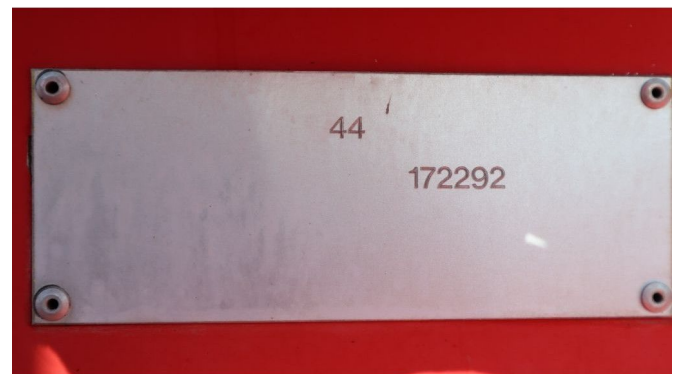
Kalmar RTD 1623 | LOG GRAPPLE | LOG STACKER

COMMON

ID	112042.02
Marca	Kalmar
Construcción	Manipulador telescópico

PROPERTIES

Año de construcción	2012
Horas de funcionamiento	30.080
Número de identificación del vehículo	17291-172293
Peso vacío	50.500 kg



ACCESORIOS

DESCRIPCIÓN

Emissieklasse: Stage IIIA

For sale:

Kalmar RTD 1623
 Year: 2012
 Operating hours: 30.080
 Operating weight: 50.500 kg

Engine & Transmission:
 Scania DC 12
 Nr cylinders: 6
 257 kW / 350 hp
 Displacement: 11.7 L
 Emissions: Stage IIIA / Tier 3
 ZF gearbox

Boom and hydraulics:
 Log grapple (360 degrees)
 Hydraulic log pusher
 Total height: 12 m

Grapple capacity: 4.8 m2

Load capacity: 16 ton

General information & options:

Presto fire extinguisher system

Cabin guard system

LED working lights

Rear view camera

Airconditioning

Heated seats

Heated mirrors

BT radio

Description:

Well maintained Kalmar log stacker. Machine has been dismantled for transport, but all parts are complete.

Ready for work!

Of course, we have more pictures and information available, and we are looking forward to helping you.