

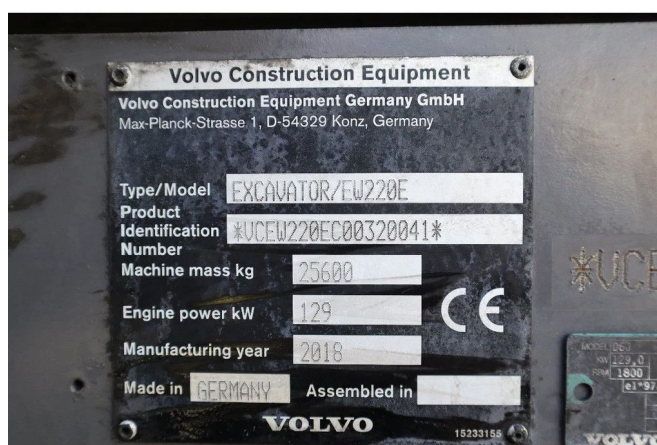
Volvo EW 220 E | TILTROTATOR | BUCKET | 2-PIECE | BSS

COMMON

ID	112370.1
Make	Volvo
Construction	Excavator

PROPERTIES

Year	2018
Operating hours	6.526
Vehicle identification number	320041
Weight	25.600 kg
Length	950 cm
Width	254 cm
Height	319 cm



ACCESSORIES

DESCRIPTION

Emissions class: Stage IV

For sale:

Volvo EW220E
 Year: 2018
 Hours: 6.526
 Weight: 25.600 kg

Engine and transmission:
 Volvo D6J
 6-cylinder diesel
 129 kW / 173 HP
 Displacement: 5.702 cc
 Emissions: Stage IV / Tier 4F
 Ad blue
 3-speed transmission

Undercarriage:
 30 km/h
 Dzer blade