

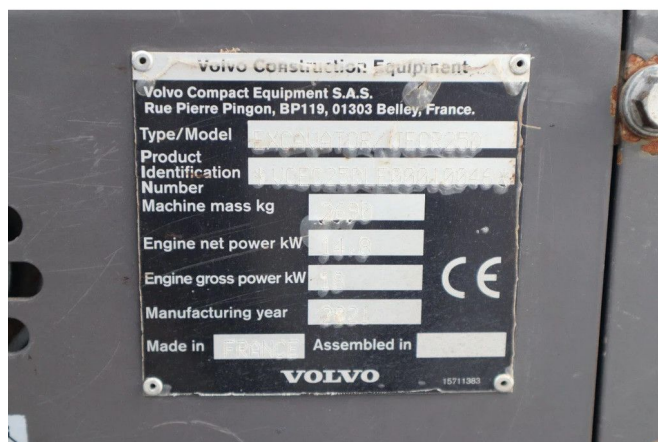
## Volvo ECR25 ELECTRIC | JECR25D | TILTBUCKET | BUCKET | LOW HOURS

### COMMON

ID	114057
Make	Volvo
Construction	Excavator

### PROPERTIES

Year	2021
Operating hours	539
Vehicle identification number	VCEC25DLE00010046
Weight	2.690 kg



### ACCESSORIES

- Onboard Computer
- Rotating beacon
- Spotlight front

### DESCRIPTION

Emissions class: Stage V

For sale:

Volvo JECR25D / ECR25D Electric  
 Year: 2021  
 Hours: 539  
 Operating weight: 2.690 kg

Electrical system:  
 Battery type: Lithium-ion  
 Voltage: 48V  
 Battery capacity: 20 kWh  
 Indicative runtime: up to 4 hours  
 Motor type: permanent magnet  
 Power: 18 kW

Undercarriage:  
 Rubber tracks 8...