

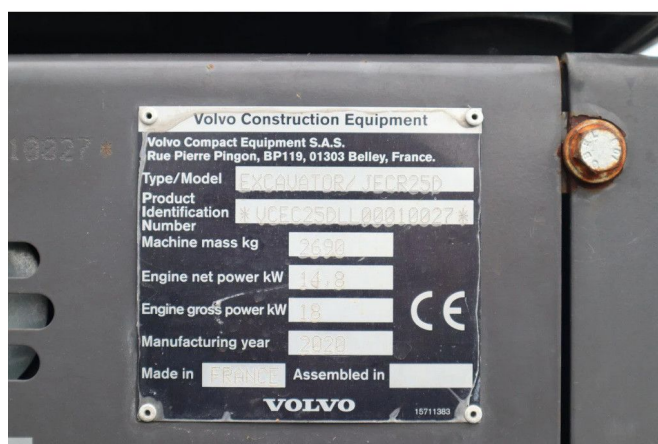
## Volvo ECR25 ELECTRIC | JECR25D | TILTBUCKET | BUCKET | LOW HOURS

### COMMON

ID	113779.01
Make	Volvo
Construction	Mini excavator

### PROPERTIES

Year	2020
Operating hours	797
Vehicle identification number	VCEC25DLL00010027
Weight	2.690 kg



### ACCESSORIES

### DESCRIPTION

Emissions class: Stage V

For sale:

Volvo JECR25D / ECR25D Electric  
 Year: 2020  
 Hours: 797  
 Operating weight: 2.690 kg

Electrical system:  
 Battery type: Lithium-ion  
 Voltage: 48V  
 Battery capacity: 20 kWh  
 Indicative runtime: up to 4 hours  
 Motor type: permanent magnet  
 Power: 18 kW

Undercarriage:  
 Rubber tracks 7...