

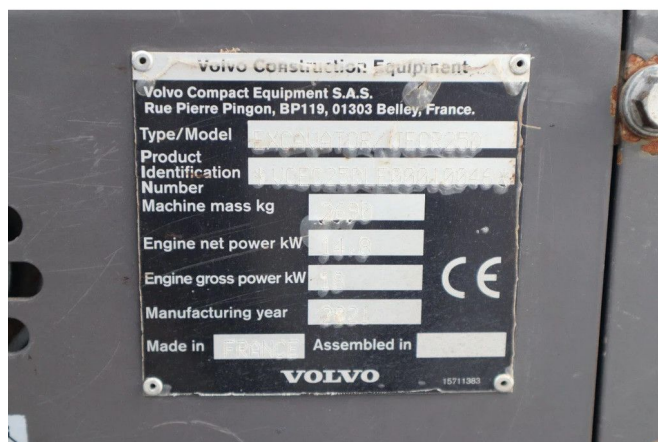
Volvo ECR25 ELECTRIC | JECR25D | TILTBUCKET | BUCKET | LOW HOURS

COMMON

ID	114057-4
Make	Volvo
Construction	Mini excavator

PROPERTIES

Year	2021
Operating hours	539
Vehicle identification number	VCEC25DLE00010046
Weight	2.690 kg



ACCESSORIES

- Onboard Computer
- Rotating beacon
- Spotlight front

DESCRIPTION

Emissions class: Stage V

For sale:

Volvo JECR25D / ECR25D Electric
 Year: 2021
 Hours: 539
 Operating weight: 2.690 kg

Electrical system:
 Battery type: Lithium-ion
 Voltage: 48V
 Battery capacity: 20 kWh
 Indicative runtime: up to 4 hours
 Motor type: permanent magnet
 Power: 18 kW

Undercarriage:
 Rubber tracks 8...