

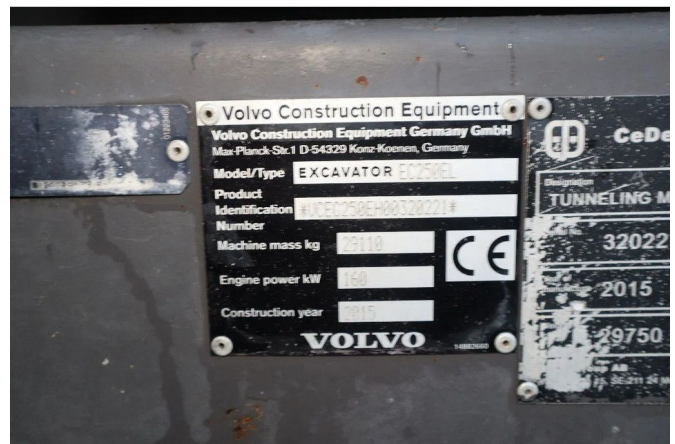
Volvo EC 250 EL | OILQUICK | DYNASET | TILT CABIN

COMMON

ID	112817.1
Make	Volvo
Construction	Excavator

PROPERTIES

Year	2015
Operating hours	5.966
Vehicle identification number	VCEC250EH00320221
Weight	29.110 kg



ACCESSORIES

DESCRIPTION

Emissions class: Stage IIIB

For sale:

Volvo EC 250 EL
 Year: 2015
 Hours: 5.967
 Operating weight: 29.110 kg

Engine:
 Volvo D8J
 Power: 160 kW / 215 HP
 Emissions: Stage 3B / Tier 4i
 Displacement: 7.7 l
 Cylinders: 6

Undercarriage:
 Plate width: 60 cm
 Plates condition: 60%
 Rolls condition: 60%
 Sprocke