

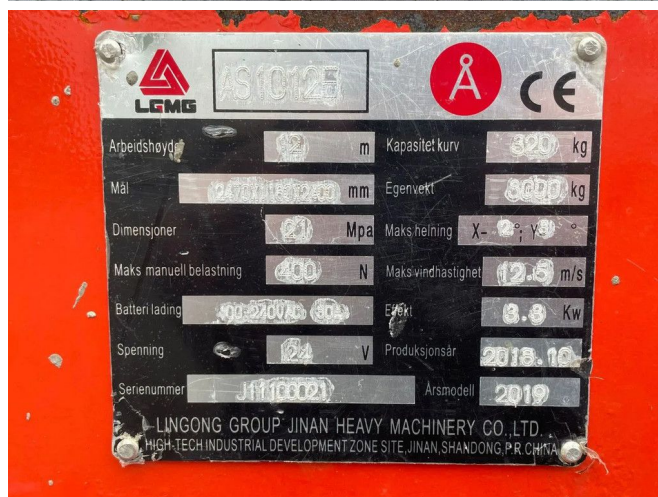
LGMG AS1012E | 12 METER | 320 KG | GS-3232 | ES 3246

COMMON

ID	112574
Make	LGMG
Construction	Aerial platform

PROPERTIES

Year	2018
Operating hours	223
Vehicle identification number	J11100021
Length	247 cm
Width	118 cm
Height	186 cm
Lifting height	1.000 cm
Lifting capacity	320 cm



ACCESSORIES

DESCRIPTION

For sale:

LGMG AS1012E
Year: 2018
Hours: 223
Weight: 3.000 kg

Performance:
Working height: 12 m
Lift capacity: 320 kg
Length platform retracted: 2.26 m
Length platform extended: 3.16 m
220v connector in basket
Non marking tires

Power source:
24V DC 240 Ah

Transport dimensions:
Length: 2.47 m
W: