

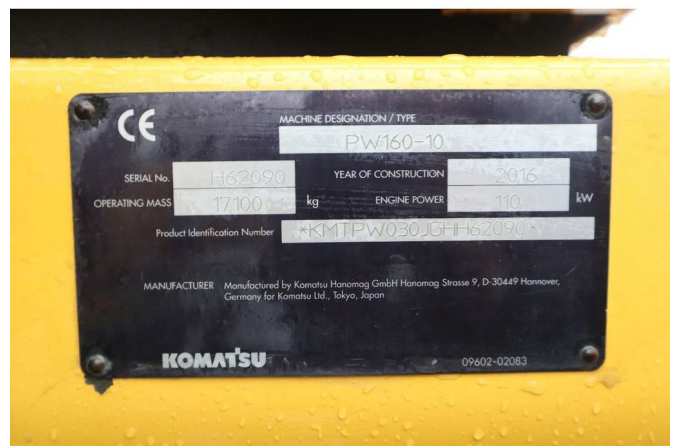
Komatsu PW 160-10 | ROTOTILT | NEW TIRES

COMMON

ID	112763.1
Make	Komatsu
Construction	Excavator

PROPERTIES

Year	2016
Operating hours	8.419
Vehicle identification number	KMTPW030JGHH62090
Weight	17.100 kg
Length	810 cm
Width	255 cm
Height	325 cm



ACCESSORIES

DESCRIPTION

Damages: none
Emissions class: Stage IIIB

For sale:

Komatsu PW160-10
Year: 2016
Hours: 8.419
Weight: 17.100 kg

Engine and transmission:
SAA4D107E-2
4-cylinder diesel
Power: 110 kW / 148 HP
Powershift transmission

Undercarriage:
Dozerblade
Trailer hydraulics
Electric connector for trailer
25