

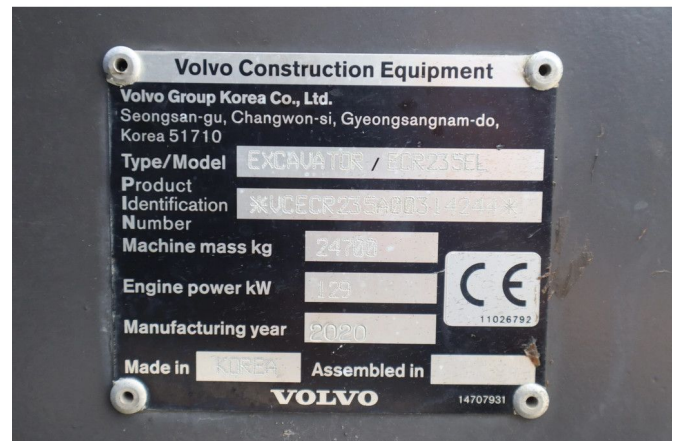
Volvo ECR235EL | ECR 235 EL | TILTROTATOR | BUCKET | GOOD CONDITION

COMMON

ID	114037
Marke	Volvo
Konstruktion	Bagger

PROPERTIES

Baujahr	2020
Betriebsstd.	9.034
Fahrzeug-Identifizierungsnummer	VCECR235A00314244
Gewicht	24.700 kg



ZUBEHÖR

- Arbeitsscheinwerfer hinten
- Arbeitsscheinwerfer vorne
- Bluetooth
- Luftgederete Sitze
- Rundumleuchte

BESCHREIBUNG

Emissieklasse: Stage V

For sale:

Volvo EC 235 EL
 Year: 2020
 Hours: 9.034
 Operating weight: 24.700 kg

Engine:
 Volvo D6J
 Cylinders: 6
 Displacement: 5.702 cc
 Power: 129 KW / 173 HP
 Emissions: Stage 5
 Ad blue

Undercarriage:
 Plate width: 60 cm
 Plates condition: 35%
 Balls condition: 50%

Chain condition: 50%

Equipment:

Hydraulic quick coupler S70

Steelwrist X26 S70 tilt rotator

Volvo bucket

Hammer / shear

Central lubrication

LED working lights around the machine

Signal light

Cabin:

Rear and side view camera

Radio

Heated seat

Airconditioning

Webasto cabin heating

Transport dimensions:

Length: 8.90 m

Width: 2.10 m